



Hampton Tower, South Quay Plaza,  
75 Marsh Wall, E14

£3,950 Per Month,

NAPIER WATT

T: 0207 935 0011  
E: [enquiries@napierwatt.co.uk](mailto:enquiries@napierwatt.co.uk)  
W: [napierwatt.co.uk](http://napierwatt.co.uk)

35 Berkeley Square, Mayfair, London, W1J 5BF









## Description

Luxury development with 24-hour concierge and advanced security. Two-bedroom, two-bathroom dual-aspect apartment on 17th floor with far reaching views across Canary Wharf and westerly toward the City of London, offering great natural light and beautiful sunsets from all rooms. The apartment is lightly furnished with wood floors, comfort cooling and good storage. Up on the 56th floor you will have access to a residents bar and a vast, stunning roof terrace for the ultimate afternoon drinks and relaxation. South Quay Plaza is an iconic Berkeley Homes development located within a five minute walk of Canary Wharf Underground & DLR stations. City airport could not be more convenient and the Thames Clipper also offers access to multiple points along the River Thames. Luxury facilities included in the rent: Swimming Pool, Gymnasium, Business Lounge, Screening Room, Private Dining Room.

2 Bedroom : 2 Bathrooms : Comfort Cooling : 24 hour Concierge : Pool; Gym : Spa : EPC Rating: B Tower Hamlets Council Tax Band F

## Key Features

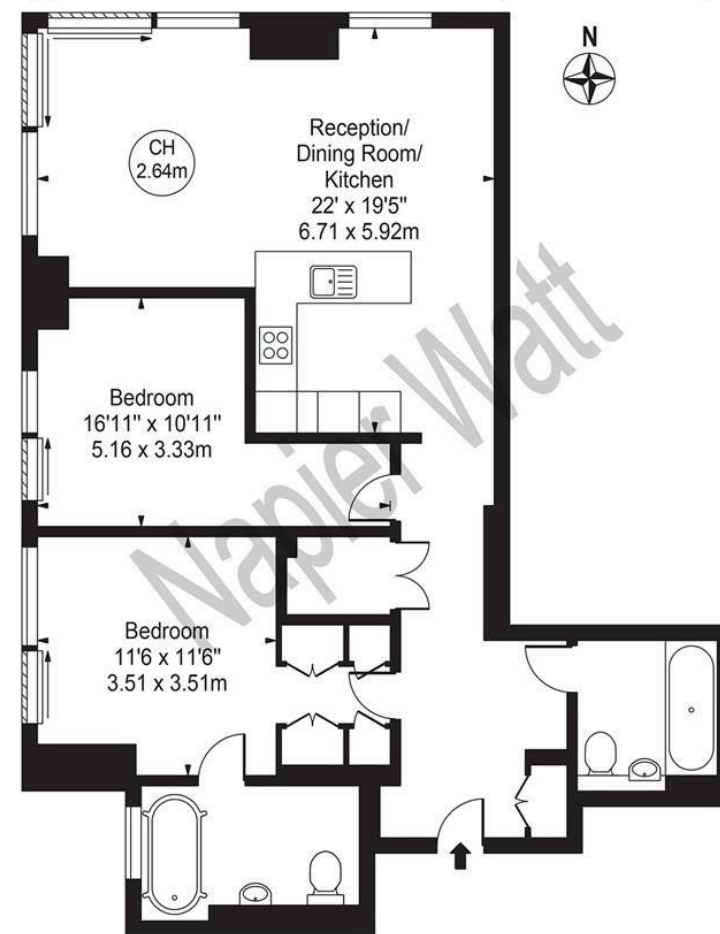
- 20M SWIMMING POOL
- 24 HOUR CONCIERGE
- BUSINESS LOUNGE
- PRIVATE DINING ROOM
- GYM
- THE QUAY CLUB
- SCREENING ROOM
- 56TH FLOOR BAR & TERRACE

## Terms

Fees & Charges: Tenancies exceeding £100,000 Per annum £480 inc VAT, Tenancies where a company is a tenant £480 Inc VAT.

## South Quay Plaza

Approx. Gross Internal Area 953 Sq Ft - 88.54 Sq M



## Seventeenth Floor

For Illustration Purposes Only - Not To Scale

This floor plan should be used as a general outline for guidance only and does not constitute in whole or in part an offer or contract. Any intending purchaser or lessee should satisfy themselves by inspection, searches, enquiries and full survey as to the correctness of each statement. Any areas, measurements or distances quoted are approximate and should not be used to value a property or be the basis of any sale or let.

IMPORTANT: We would inform prospective purchasers that these sales particulars have been prepared as a general guide only. A detailed survey has not been carried out, nor the services, appliances and fittings tested. Room sizes should not be relied upon for furnishing purposes and are approximate. If floor plans are included, they are for guidance only and illustration purposes only and may not be to scale. If there are any important matters likely to affect your decision to buy, please contact us before viewing the property.